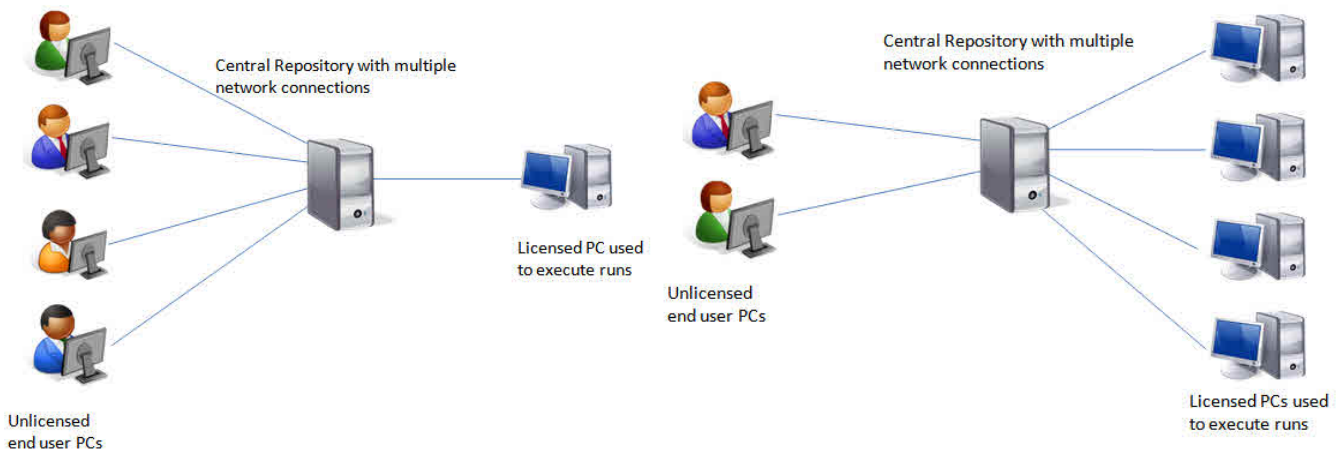


Run Manager

A new tool to help you manage your CERC model runs and make the most of your licensing

- **share all valid licences*** over your local area network (i.e. on one site)
- define your run on your own PC, automatically execute it on a licensed PC and have the results returned to you for analysis
- **multiple runs** can be executed concurrently on a multi-processor PC with a single user licence
- **prioritise** your runs
- **monitor progress** of runs, including **estimated completion times**
- ensures everyone uses the **same versions** of all licensed models

Useful for single and multiple licence holders



Example 1: Several users sharing one licence

Example 2: Large project utilising several licences

Run Manager can organise and execute runs for all of the following models: ADMS, ADMS-Roads[†], ADMS-Urban and ADMS-Airport.

*Run Manager allows more efficient use of model licence(s), it does not change the maximum number of licensed PCs to perform model runs.

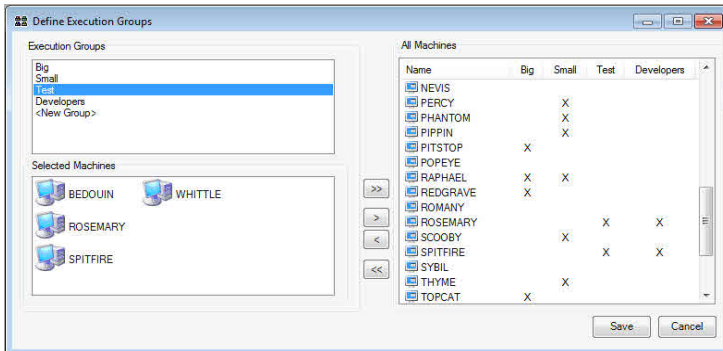
[†]Not suitable for use with ADMS-Roads Extra

CERC

Environmental Software

More about Run Manager

With Run Manager you can:

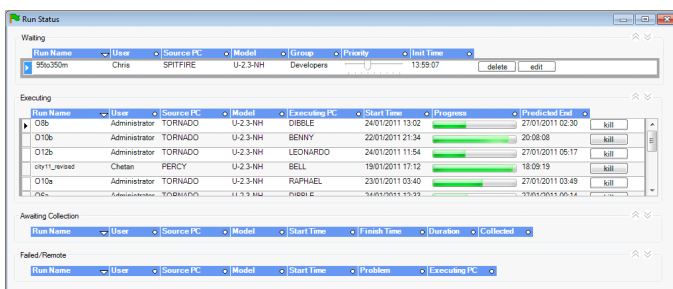
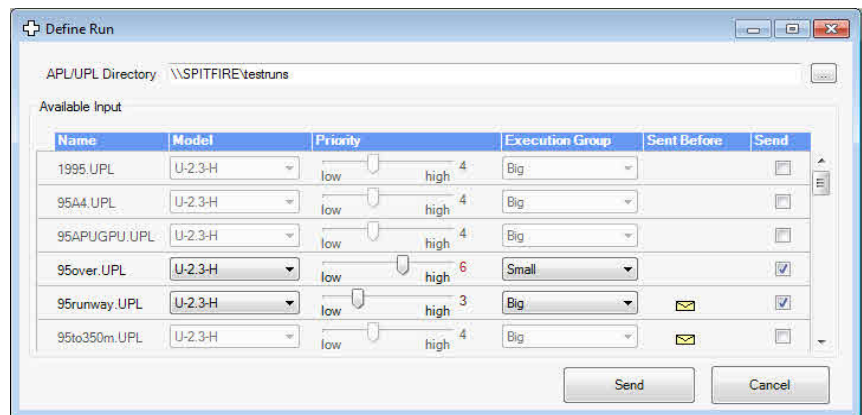


◀ Set up groups of PCs

- Prioritise different types of model runs to different groups
- Schedule urgent projects to the most powerful PCs

Submit your runs ▶

- Drag and drop your UPL/APL files from Explorer onto Run Manager
- Define the model to use, the priority of the run and the Execution Group



◀ Monitor your runs & PCs

- Check run status: waiting, running or finished
- View estimated end times
- Check PC status: executing, searching or idle

Run Manager on your licensed PC(s) can:

- Start automatically with Windows
- Continually check the central repository for new runs to execute

Cambridge Environmental Research Consultants
tel: +44 (0) 1223 357773 email: enquiries@cerc.co.uk

www.cerc.co.uk